



PS-28 Summer Lilies & Daisies on a Victorian Tray \$8.50 (left)

4 Photos, Intermediate. Oils.

PS-23 Pansies on a Mantle Clock \$8.50 (right)

Colorful pansies on black with silver leaf trim. 4 Photos. Intermediate. Oils.

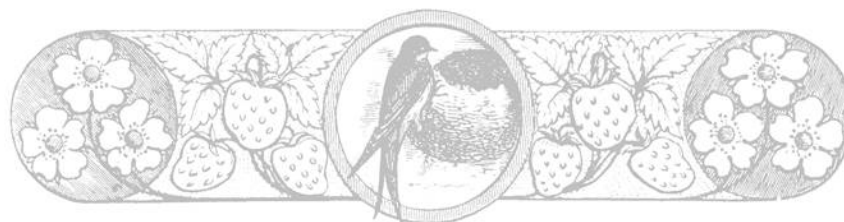


PS-20 Great-Grandma's Sugar Shaker & Berries \$7.50 (left)

Paint on masonite or canvas for framing, or on a wood surface such as a cabinet door or box. Size is approximately 9"x12". Berries are painted with an interesting glazing technique.

3 Photos. Advanced. Oils.

See pages 21 and 22 for Fabric Painting Packets



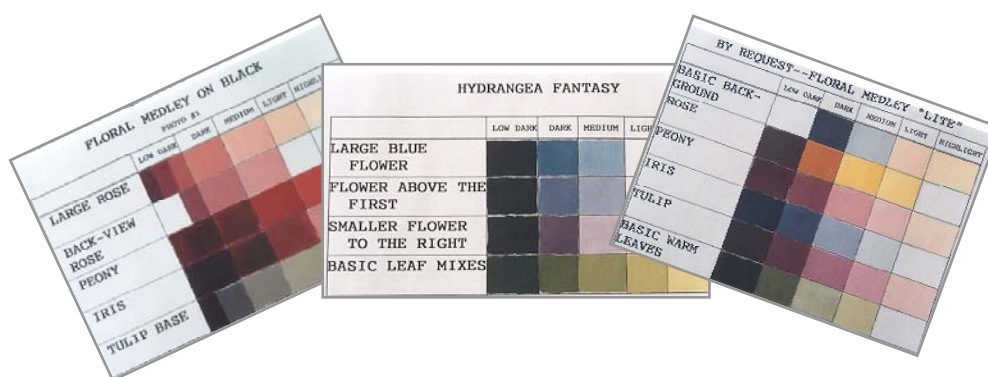
*To view larger pictures of all items, please visit my website at
<http://www.peggystogdill.com>*

Color Swatch Photos for Oil Packets

Each of the three packets below contains 4"x6" photos of actual painted color swatches of *basic* mixes used in several design packets. The intended purpose of the photos is to help the painter to determine the hue, value, intensity, etc. of the more important mixes in the palette of a particular painting—a sort of “jump start”.

I began adding these “color swatch photos” *directly* to the oil packets beginning with *PS-63 Apples & Berries on a Recipe Box*. The photos below are sold in groups because the packets they go with were already “out there”, and this seemed the easiest, most equitable way to make them available.

Though every effort has been made to ensure accuracy, there are inherent limitations in the painting and reproduction of the swatches, and they are intended as a *guide* only.



PS-49 Color Swatch Set A \$7.50

Contains 5 photos for the following 6 packets:

- Charlotte's Rose
- FANciful Pansies
- Hydrangea Fantasy
- Peruvian Lilies on a Dresser Tray
- Poppies on Black Canvas
- Yellow Wild Roses on Black Canvas

PS-50 Color Swatch Set B \$7.50

Contains 6 photos for the following 4 packets:

- Floral Medley on Black (2 photos)
- Mixes Bouquet, High-Key Floral (2 photos)
- Still Life with Tulips and Grapes
- Summer Lilies and Daisies on a Victorian Tray

PS-51 Color Swatch Set C \$7.50

Contains 4 photos for the following 4 packets:

- After the Dance
- Bountiful
- By Request—Floral Medley “Lite”
- Spring Floral

Recommended Oil Painting Studies

From Ann Kingslan, MDA and Mary Kingslan Gibilisco, CDA, BFA:

New to oil painting, or simply need to brush up on your skills, techniques, or theory knowledge? You'll find the following selections very helpful, and excellent companions to my oil packets:

Packets:

- From Ann Kingslan's Notebook Series, **Blending & Glazing Basics**.....#KG-001 \$7.95
 From Ann Kingslan's Notebook Series, **Shadow Study**.....#KG-002 \$7.95
Drips, Drops & Puddles, by Ann Kingslan & Mary Kingslan Gibilisco.....#KG-013 \$8.95

Books:

- Focus on Colour**, by Ann Kingslan, MDA & Mary Kingslan Gibilisco, CDA, BFA
 48 pages, projects with emphasis on color theory, oils, Genesis paints.....#KG-012 \$11.95
Right From the Start, by Ann Kingslan, MDA & Mary Kingslan Gibilisco, CDA, BFA
 40 pages, 5 theory projects for beginners in oils.....#KG-004 \$10.95
Focus on Trompe L'oeil, Still Life Studies, Vol. II, by Ann Kingslan, MDA & Mary
 Kingslan Gibilisco, CDA, BFA 35 pages, 14 color.....#KG-010 \$10.95
Focus on Realistic Glass, Still Life Studies, Vol. III, by Ann Kingslan, MDA & Mary
 Kingslan Gibilisco, CDA, BFA 36 pages, 12 color.....#KG-007 \$10.95
Ellipse Theory, by Ann Kingslan, MDA & Mary Kingslan Gibilisco, CDA, BFA.....#KG-265 \$9.95
 This template is used to create perfect elliptical shapes (circles in perspective). Ann and Mary use
 this ellipse depth in all of their below-eye-level paintings. Includes written lesson.
Ellipse Template only (no lesson).....#KG-265b \$6.95

Out-of-Print Books on CD:

- Guide to Using & Mixing Colour** by Ann Kingslan, MDA.....#KG-CDColour \$11.95
 The popular classic book by Ann Kingslan, MDA, now available on CD. The CD contains a pdf
 so you can print your own book or just select pages. 92 pages, 16 in color.
Focus on Realistic Roses by Ann Kingslan, MDA and Mary Kingslan Gibilisco, CDA, BFA
 #KG-CDRoses \$11.95

Another popular book, now available on CD. The CD contains a pdf so you can print your own
 book or just select pages.



Recommended DVD's

From Ann Kingslan, MDA and Mary Kingslan Gibilisco, CDA, BFA:

- Introduction to Color Theory**, by Ann Kingslan, MDA..... #KG-011 \$21.95
- Blending Secrets of a Master**, by Ann Kingslan, MDA.....#KG-08 \$21.95
Highly recommended for those just starting in oils.
- Focus on Realistic Glass**, by Mary Kingslan Gibilisco, CDA, BFA.....#KG-016 \$21.95
Includes color chart, line drawing, written instructions and multiple photos. Mary explains the technique of painting colored glass, clear glass and the use of high and low key back-grounds.
- Focus on Realistic Leaves**, by Ann Kingslan, MDA.....#KG-017 \$21.95
Includes written instructions, color swatch chart, photo. For oils and/or Genesis oils. Ann demonstrates and explains the technique of painting leaves on both light and dark back-grounds. Included are turn backs, bug bites, accents, tints, flat leaves and ribbon leaves.
- Start to Finish: Tips & Techniques from the Masters**.....#KG-018 \$21.95
84 minute DVD: Covers surface preparation, transfer techniques, proper blending, glazing methods, shines & shadows, varnishing & waxing, wet sanding, etc. By Ann Kingslan, MDA & Mary Kingslan Gibilisco, CDA, BFA.
- Color Mixing & Theory** by Mary Kingslan Gibilisco, CDA, BFA..... #KG-414 \$21.95
Color mixing, using just 9 basic pigments to create unlimited hues, values and intensities. Also learn how to create form in objects and space and volume in a painting. Includes a 13-page printed lesson.
- Drawing DVD** by Mary Kingslan Gibilisco, CDA, BFA.....#KG-412 \$21.95
Learn 1 point and 2 point linear perspective, how to correct linear perspective mistakes, how to draw complicated shapes using cubes and spheres, how light affects objects and how to shade, and the characteristics of shadows and how to plot out shadows. Explore ellipses at all eye levels and learn how to use an ellipse template.
- Teacup Still Life**.....#KG-5D \$21.95
DVD lesson from Kingslan/Gibilisco. Includes a 60 minute video lesson, line drawing, printed instructions, 3 photos and color swatches.
- Lemons & Flow Blue China**.....#KG-420D \$21.95
75 minute video lesson also contains a line drawing, written instructions, 3 photos and color swatches.
- Dutch Old Master Fruit & Flowers**.....#KG-378 \$23.95
One of Ann & Mary's most popular designs. Contains full lesson and 3 hour and 20 minute DVD.



Reference Photo CD's by Joyce Sieve, CDA

Photo/reference CD's for the artist by Joyce Sieve, CDA. Joyce has photographed and compiled the photos on CD's as below:

\$17.50 Each

Fruits	#JS-001
200+ photos of strawberries, pears, plums, peaches and grapes.	
Vegetables	#JS-002
200+ photos of peppers, onions, garlic, tomatoes, and herbs.	
Flowers 2	#JS-003
200+ photos of dahlias, geraniums, and lilies.	
Roses	#JS-004
Flowers	#JS-005
200+ photos of gladiola, hollyhocks, and sweet peas.	
Spring Flowers	#JS-006
200+ photos of bleeding heart, columbine, lilacs and lily of the valley.	
Summer Flowers	#JS-007
200+ photos of morning glories, nasturtium, poppies and pansies.	
Tulips, Volume 2	#JS-008
300+ photos of purple, orange and yellow tulips.	
Iris	#JS-009
300+ photos of blue, gold, multi-colored, pink, white, and yellow iris.	
Tulips	#JS-010
300+ photos of multi-colored, pink, white, and red tulips.	
Lilies	#JS-011
300+ photos of Lilies, calla lilies, water lilies and Easter lilies.	
Still Life with Containers	#JS-012
Photos of still life set-ups with containers, fruit, flowers, etc.	
Flowers, Vol. 3	#JS-013
Hydrangea, peonies, petunias, and zinnias.	
Flowers, Vol. 4	#JS-014
Azaleas, clematis, begonias, and tulip tree blossoms.	



Metal Leafing Supplies

Assorted Metal Leaf

- ML-C** Copper Leaf, 25 sheets, 5.5 inches square.....\$9.20
- ML-S** Silver Leaf (silver color aluminum metal leaf), 25 sheets, 5.5 inches square.....\$8.00
- ML-G** Gold Leaf (genuine gold color imitation metal leaf), 25 sheets, 5.5 inches square.....\$8.30



Variegated Metal Leaf

- ML-VD** Variegated Dawn Leaf, 6 sheets, 5.5 in. sq.....\$6.00
- ML-VR** Variegated Red Leaf, 6 sheets, 5.5 in. sq.....\$6.00
- ML-VG** Variegated Green Leaf, 6 sheets, 5.5 in. sq.....\$6.00
- ML-VB1** Variegated Black Leaf, 6 sheets, 5.5 in. sq.....\$6.00
- ML-VB2** Variegated Black Leaf, 25 sheets, 5.5 in. sq.....\$23.95
- ML-VBBL** Variegated Blue Leaf, 6 sheets, 5.5 in. sq.....\$6.00



Metal Leaf Flakes

Metal Leaf Flakes, 3 grams in each package. Nice for many leafing techniques, especially small areas, delicate stencils, etc.

- ML-FIG** Gold \$ 6.49
- ML-FIS** Silver..... \$10.19
- ML-FIC** Copper.....\$6.69
- ML-Flmix** A mixture of assorted plain and variegated leaf\$12.49



Metal Leaf Adhesives, Sealer (not pictured)

- ML-GLS** Gold Leaf Sealer, 2 ounce.....\$3.00
- ML-GLSize** Gold Leaf Size (Adhesive), 2 ounce.....\$3.00
- ML-THICK Size** Adhesive for stenciling with metal leaf (regular size is too thin and will leak under the stencil).....\$3.00



Brushes

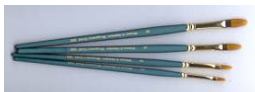
Winsor & Newton™ Brushes:
Regency Gold® Synthetic:

Series 510 Short Bright : short-bristle flats—great brush for oils or fabric painting. Very durable. Synthetic.



Size	0	\$ 5.30
	2	5.90
	4	7.10
	6	8.20
	8	9.80
	10	12.10
	12	13.15
	14	14.40
	16	15.60
	18	17.60
	20	20.80

Series 550 Filberts: Excellent brush for blending with oils. Synthetic.



Size	2	6.90
	4	8.90
	6	10.20
	8	12.10

Series 520 Rounds: Nice brushes for tiny detail work. Synthetic.



Size	3/0	4.35
	0	4.45

Series 540 (short) Liners: Synthetic.



Size	10/0	4.35
	5/0	4.35

Winsor & Newton™ Miniature Designer Short Round Kolinsky Sable

Series 7 Miniature: At the top of my favorites! THE most versatile detail brush ever! Sable.



Size	3/0	17.60
	1	21.10
	2	22.20
	3	25.65

Ann Kingslan Brushes, Mops:



Size	00	2.00
	0	2.75
	1	3.00
	2	4.20
	4	5.50

Chezza Filbert Rake:

I use these to establish growth direction and subtle veining on appropriate types of flowers and leaves.



Size	1/8"	\$ 9.50
	3/16"	9.80
	1/4"	10.35

Bette Byrd™ Brushes:

Series 400, Synthetic Short Liners:



Size	10/0.....	3.95
	6/0.....	4.35
	1.....	5.00
	2.....	5.00

Series 500, Synthetic Scrollers (long liners):



Size	10/0.....	\$3.95
	6/0.....	4.85
	1.....	5.00

Loew-Cornell Jackie Shaw Liners:

Excellent all-purpose liner—not too short, not too long.



Size	10/0.....	4.89
	0.....	4.89
	1.....	4.89
	2.....	5.25

Athena Sable Filbert Mops:

These sable filbert mops offer more precision than an ordinary mop, and a softer blend than an ordinary filbert. WONDERFUL for final blending in oils!



Size	2.....	10.00
	4.....	12.00
	6.....	14.00
	8.....	16.00
	10 (not pictured)	23.00
	12 (not pictured).....	32.00

Loew Cornell Stencil Brushes:

See page 19.

Cheri Rol Sable Blenders (brights):

A very nice substitute for the discontinued Winsor & Newton Series 710's. Sable.



Size	0.....	\$ 6.45
	2.....	7.65
	4.....	8.35
	6.....	9.50
	8.....	10.75
	10.....	12.50

Scharff Series 429 Synthetic Mini Filbert:

The perfect brush for tiny places!.....\$5.75



Scharff Series 440 Sable Mini Filbert:

For those who prefer sable.....\$7.90



Scharff Series 470 Sable Liners:

This is the best brush I've found for very fine lines. I used the 2/0 for the veining on the poinsettias in *An Elegant Christmas*, see page 5.



Size	2/0.....	7.90
	0.....	8.40
	1.....	9.00

Loew Cornell Fabric Dye Brushes:

White nylon, short round, stiff bristle brush. I use this for spattering techniques as well as for moving stubborn paint when glazing and/or scumbling in oils.



Size	0.....	\$3.19
	2.....	3.69
	4.....	4.39

Miscellaneous Supplies

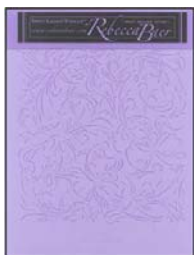


CHACO Blue Chacopaper \$6.00

This is the transfer paper I use for my fabric painting. It transfers a blue line that is completely removable with water—perfect for use with the white linens. (Not recommended for use with oil paints).

VSNP Value Scale Notes Pad \$4.95

From Kingslan & Gibilisco Decorative Arts. 25-sheet pad to record samples of paint mixes used in a painting.



ST-101 Rebecca Baer Background Stencil \$15.95 (left)

This is the stencil used for the **An Elegant Christmas** tray (see page 5).

ST-807 Rebecca Baer Petite & Elegant Stencil, Regal Round \$9.95 (right)

This stencil is used for both the **Fragrance and Ruffles & Flourishes** plates (see page 3).



Stencil Brushes

These are the stencil brushes recommended by Rebecca Baer for use with her delicate stencils.

LC1150-1/2	1/2" Stencil Brush	\$2.00
LC1150-3/4	3/4" Stencil Brush	2.75
LC1150-1	1" Stencil Brush	3.50



RB-Book 1 \$7.50

Companion to Rebecca's beautiful stencils. Volume 1 covers basic stenciling techniques, gilded stenciling, opaque embossing, and much more. 14 pages, with photo-illustrations.

RB-Book 2 \$8.50

18-page, illustrated booklet with expanded techniques for using Rebecca's beautiful stencils. A few of the techniques covered are pressure embossing, opaque embossing, flocked stenciling, bead techniques, faux leather, and much

more.



Packet Bag Pre-opened bags with zip tops, hang-hole and vent-hole. Two sizes:

6 1/4" x 9"	\$8.00/package of 100
9" x 12"	\$12.50/package of 100



Clear Archival Sleeves These are the sleeves I use for my vintage postcards, photos, and other paper goods. Crystal clear.

4" x 6" Photo size	\$5.00/package of 100
5" x 7" Photo size	\$7.00/package of 100
Postcard size	\$4.50/package of 100
Full-page size	\$11.00/package of 100

Right: Holly Clip \$2.00

Charming painted metal clips with berries made from tiny "jingle bells". Use to display a special Christmas card, photo, vintage postcard, or whatever else you can dream up. 5 1/2" total length.

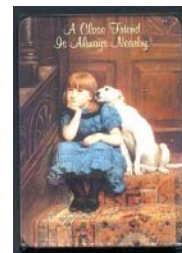
Please note, the clips do grip tightly and might put a slight dent in paper items.

Postcard not included.



Right: 10724 Acrylic Frame Magnet \$3.00

Slide a "Reminisce" card into this top-quality acrylic magnet frame for a meaningful keepsake gift. Or use the frame for a favorite photo or a miniature painting--perfect for displaying Artist Trading Cards! *See page 49 for Reminisce cards.*



Left: 10725 Acrylic Frame Key-Fob \$4.00

Top-quality acrylic frame/key-fob for a "Reminisce" card, a photo, or a miniature painting--perfect for Artist Trading Cards! 3 7/8" x 2 3/8". If you wish, two cards, photos, etc. may be inserted back-to-back. *See page 49 for Reminisce cards.*



Visit my website to see Specials, Closeouts, Vintage Postcards (like the one above) & New Items.